

CALVARY CHAPEL SAWGRASS

2010 ANNUAL FINANCIAL REPORT

DEAR CHURCH FAMILY,

January, 2011

Thank you for your faithfulness to God and giving to Calvary Chapel Sawgrass. As we begin our 20th year of ministry together, we are now reaching more people for Christ than at any other time in our history as a church. All of our services are literally bursting at the seams and our family members, friends and neighbors are connecting with God and one another like never before because of our ministry together. At this rate, it will not be long before we need to break ground again and begin phase 2 of our building plans. Thank God for what He is doing and for your faithfulness in giving. We are reaching our world for Christ and none of this would be possible without you!

There are two exciting things on the horizon for us at Calvary Sawgrass:

- 1. The Ultimate Church Picnic!** – One of the great highlights of every year is our annual church picnic where we all gather as one big family. This year, we will be gathering at C.B. Smith Park on Sunday, March 13th for an awesome time of fun and fellowship. *Mark your calendars now and make plans to bring your family and friends!*
- 2. 20th Anniversary Easter Celebration!** – We are planning our largest, single evangelistic event ever this coming Easter and renting the Bergeron Rodeo Grounds in Davie - a large covered outdoor arena that seats over 5,000 people - for our 20th Anniversary Easter Celebration! *Start praying now and be sure to bring all of your family and friends!*

Finally, I would like to challenge you to take **God's Generosity Challenge** in this New Year. As we grow in every way, God wants us to grow in generosity also. As we all grow, God's Church grows! For some of us, that means taking the first step by becoming a **priority giver** – make giving any amount to God a regular, consistent priority in your budget and financial life today. For others, your next step is becoming a **percentage giver** – the biblical norm known as **tithing** – giving back to God the first 10% of all He gives to you. And for others, you are ready to grow into **generous givers** – giving not only your tithe to God, but sharing above and beyond as God blesses you. Every gift matters and every person makes a difference – and we could never reach our world for Jesus Christ without you! Take the generosity challenge and watch as God blesses your life today! Thank you.

*“Bring the **whole tithe** into the storehouse that there may be food in My House, and prove Me now in this, says the Lord of hosts, and see if I will not open for you the windows of heaven and pour out such **blessing** that there will not be room enough to contain it.” Malachi 3:10*

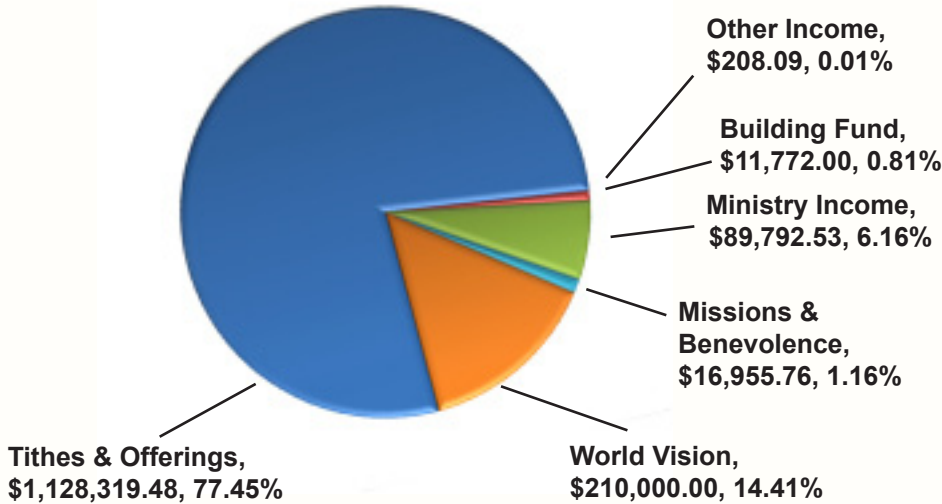
Reaching Our World for Christ,

Pastor Gary

2010 Ministry Contributions*

INCOME EXPLAINED

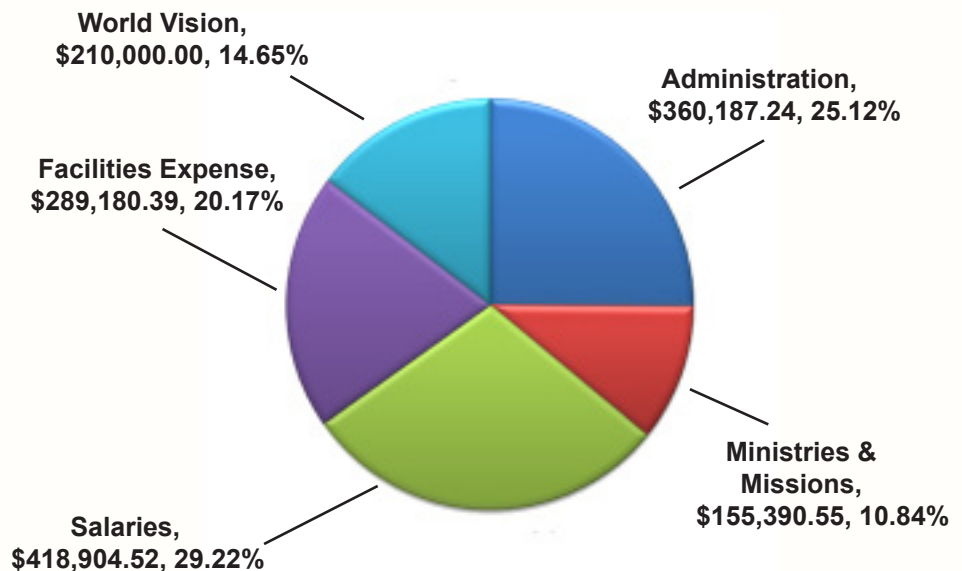
Tithes & Offerings	\$1,128,319.48
<i>The general tithes and offerings of the members of CCS.</i>	
Building Fund	\$11,772.00
<i>Donations specified towards building Ministry</i>	
Ministry Income	\$89,792.53
<i>Funds specified for scheduled ministry events (Youth Camp, Men's Rafting, etc), Worship Cafe revenue, & Resource Center revenue.</i>	
Other Income	\$208.09
<i>Revenue raised through rebates, refunds, and insurance claims</i>	
Missions & Benevolence	\$16,955.76
<i>Church contributions directed towards our Missions and Benevolence ministries.</i>	
World Vision	\$210,000.00
<i>These funds represent the commitment of the congregation to our adopted community in Kirindon, Kenya through our World Vision Sponsorships. These are funds directly received by World Vision.</i>	



EXPENSE EXPLAINED

Administration	\$360,187.24
<i>Costs associated with the general operation of Calvary Chapel Sawgrass. They include, amongst others, office supplies, printing expenses, postage and freight, personnel costs (excluding salaries), audit fees, bank charges, equipment leases, communication costs, and all non-property insurances</i>	
Salaries	\$418,904.52
<i>Includes the Salaries of eleven full time & three part time employees.</i>	
Facility Expense	\$289,180.39
<i>Costs associated with maintenance and upkeep of the 10 acre property. They include amongst others mortgage, utilities, housekeeping & grounds services, and security</i>	
Ministries & Missions	\$155,390.55
<i>Costs associated with Missions, Benevolence, Community Outreach, Women's & Men's Ministry, and Children's & Youth Ministry</i>	
World Vision	\$210,000.00
<i>These funds represent the commitment of the congregation to our adopted community in Kirindon, Kenya through our World Vision Sponsorships. These are funds directly received by World Vision.</i>	

& Expenditures



* The Church Budget Year Runs January 1st, 2010 Through December 31, 2010.

THREE BIG REASONS WHY YOUR GENEROSITY MATTERS!

*Our budget goal for 2011 is **\$125,000.00/month**. We have worked hard over the past several years to maintain excellence in ministry while at the same time cutting costs. Please review the Income and Expense report on the next page for more details. From January 1st through December 31st 2010, our total average monthly operating expenses were **\$102,000.00/month** and we received **\$104,000.00/month** on average in contributions. If we can raise the bar by approximately 25% we will be able to accomplish the following critical ministry goals:*

1. REACH MORE PEOPLE FOR JESUS

As we begin our 20th year of ministry together, we have reached thousands of people for Christ in our own community and around the world with the gospel. Individuals, parents, children, youth and families were all changed by the love of God because of our ministry together and our church continues to grow. We continue to share the love of Jesus by serving our adopted community of 55,000 people living in extreme poverty in Africa, a community of 15,000 people in Haiti, our Angel Food Ministry and our other missions at home and around the world. This coming Easter we are planning our largest, single evangelistic event ever and renting the Bergeron Rodeo Arena to reach out to our community with the life-changing message of Jesus Christ. We have made an eternal difference in the lives of thousands and thousands of people in 2010 and with your help we can raise the bar and reach even more people for Jesus in 2011!

2. IMPROVE OUR FACILITIES & PREPARE FOR PHASE II OF OUR BUILDING PLANS

Our current facilities need constant updating and our growing ministry requires additional space and staffing. The second phase of our building plan includes adding a second floor to our existing classrooms, building a new 1,500 seat sanctuary on our property and turning the current sanctuary into a gym and fellowship hall for use by our congregation, children, youth and new Christian Middle School. We hope to begin this phase soon and we need to raise the bar in order to begin the initial funding for it.

For more information visit our website calvarysawgrass.org/building.php

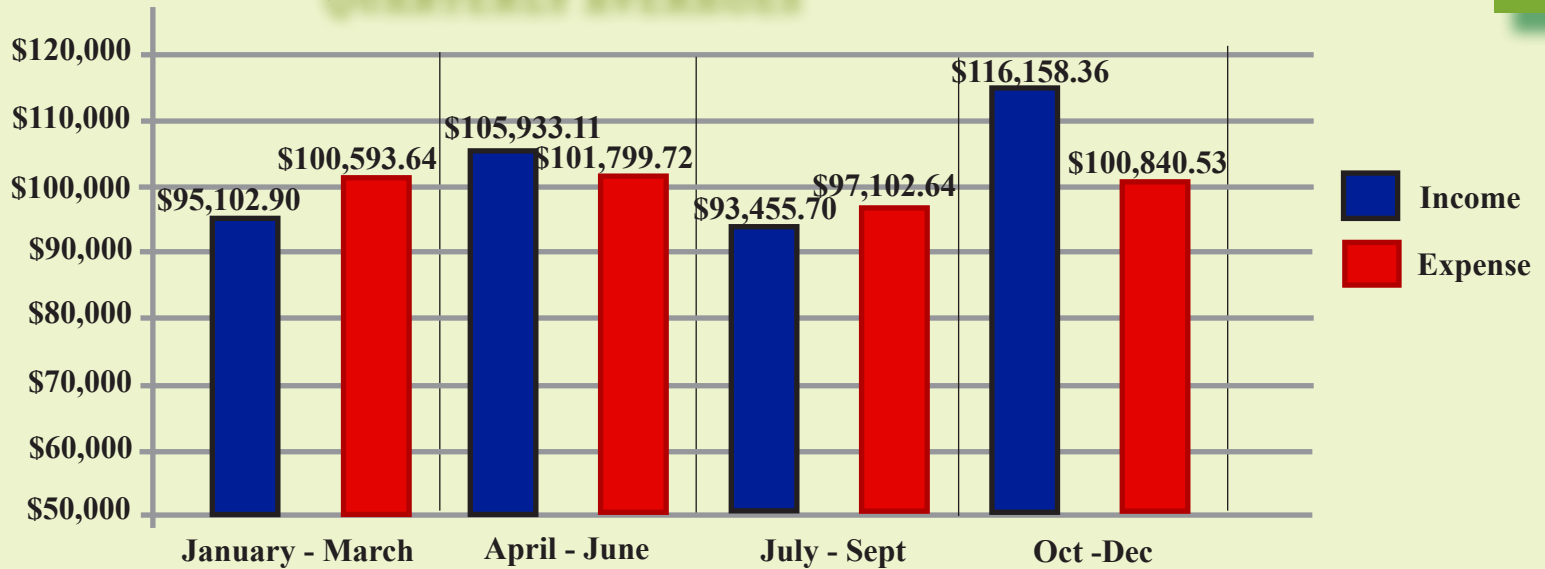
3. PAY DOWN OUR DEBT

Currently, we carry a \$2.5 million debt on our land and buildings. We are negotiating with lenders nationwide to finance our future building plans and refinance our existing mortgage. A stronger cash flow greatly improves our negotiating position. We have made nearly \$1 million in interest payments alone over the past 5 years on this debt. If we can raise the bar and aggressively pay down the principal on our mortgage and ultimately retire it, we can save over \$2.5 million dollars in interest and free up valuable resources to reach even more of our world for Jesus Christ!

Calvary Chapel Sawgrass is 100% member supported and does not receive funding from any other source. We depend entirely on God and the faithful giving of church family members like you to reach our world for Jesus Christ.

2010 MONTHLY INCOME & EXPENSES

QUARTERLY AVERAGES



*Above averages include tithes & offerings, missions, special events and all other income and expense.

FROM THE PASTOR...

Let me begin by thanking you for your generosity. The above graph shows our average monthly income and expenses for 2010. As you can see, as always, where God guides He also provides. As you can also see, although we are growing rapidly we have not yet met our budget goal of **\$125,000/month**. Please pray with me that God will continue to bless our congregation in the New Year and that we will reach our budget goals and fully fund our vision to reach even more of our world for Jesus Christ in 2011! Our hope is that this update helps you understand the facts about our church financial goals and how you are making an eternal difference through your giving.

Reaching our World for Christ,

Pastor Gary

*"Reliable communication permits progress."
Proverbs 13:17 (LB)*

3 GIVING OPTIONS @ CALVARY SAWGRASS

- 1. Give online at CalvarySawgrass.org.** Visit our website and click on giving, and then follow the simple instructions. It is safe and easy.
- 2. Give during any of our services.** Our tithe and offering boxes are located at the entrance of our sanctuary and in the lobby. Use a giving envelope found in your seat back.
- 3. Mail your gift to our church office.** You can use the offering envelopes provided in this update or in the church.

This report is intended for members of the Calvary Chapel Sawgrass church family only. If you received this update in error, please let us know and accept our apologies. If you would like to receive a quarterly update of your personal contributions, please contact the church office.